



# BIG IDeA ACCESSIBILITY & MAPATHONS

# ACCESSIBILITY

A photograph of a public space, possibly a transit station or a large indoor area, with a person in a wheelchair in the foreground. The person is wearing a helmet and a backpack. In the background, there are other people, including a person standing and another person walking. The scene is overlaid with a dark red tint, and the word "ACCESSIBILITY" is written in large, white, bold, sans-serif capital letters across the center.

A photograph of a public space, possibly a transit station or a large building lobby, with a person in a wheelchair in the foreground. The image is overlaid with a dark red semi-transparent filter. The person in the wheelchair is wearing a backpack and is moving towards the right. In the background, other people are visible, some standing and some walking. The architecture features concrete pillars and a balcony with a metal railing.

# ACCESSIBILITY

IS MUCH MORE THAN JUST THE BUILT ENVIRONMENT

# MAPATHONS

LOOK BEYOND THE ENTRYWAY, AND EXAMINE  
BUSINESSES' ACCESSIBILITY ON MANY FRONTS

# WHAT IS A MAPATHON?

Mapathons are a method of evaluating the accessibility of a business or facility with regards to their built environment as well as customer service concepts and interior layout access.



# WHAT WE LOOK AT:

Access to Entryway

Ability to Navigate Interior

Adequate Lighting Indoors

Guide Dog Access

Adequate Noise Levels

Accessible Parking

Staff Actions (Offers of aid in lieu of built environment issues)

# WHEELMAP.ORG



**wheelmap.org**

Rollstuhlgerechte Orte finden.

Map showing Queen St W, Ryerson Ave, and other streets with wheelchair accessibility icons. The map displays various icons such as a wheelchair, a shopping cart, a coffee cup, and a person with a cane, indicating different types of accessibility features at various locations along the streets. The map is centered on Queen St W, with Ryerson Ave to the west and August Ave to the east. The street names are clearly visible on the map.



The map shows a street grid with labels for ST PHIPPS ST, ST NICHOLAS ST, YONGEST YONGEST ST, WELLESLEY ST W, WELLESLEY ST E, and WELLESLEY. A popup window for Scotiabank is open, displaying the following information:

- Scotiabank** (North America > Bank / Post office > Bank)
- Wheelchair accessibility:**
  - Wheelchair accessible ?
  - Toilet status unknown ?
- Buttons: Details, edit, share, and a lightning bolt icon.

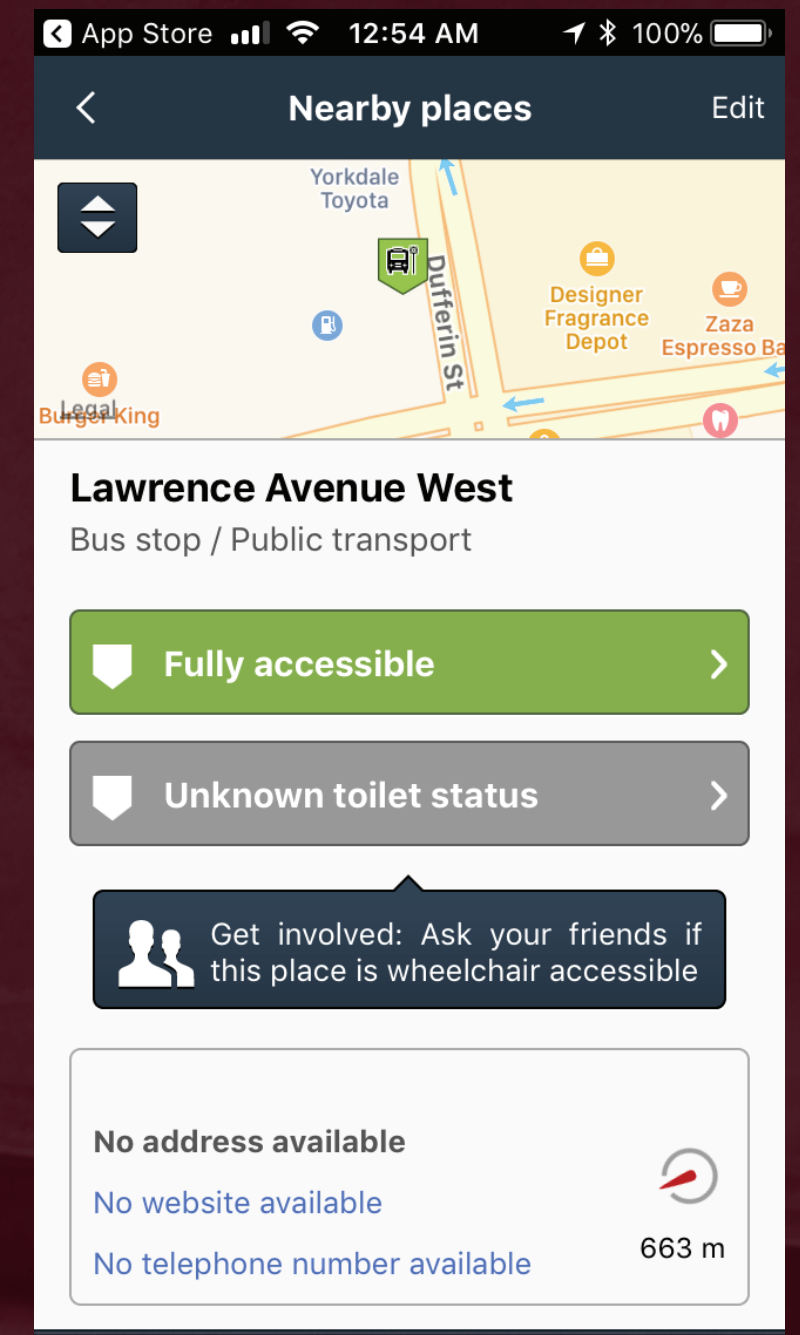
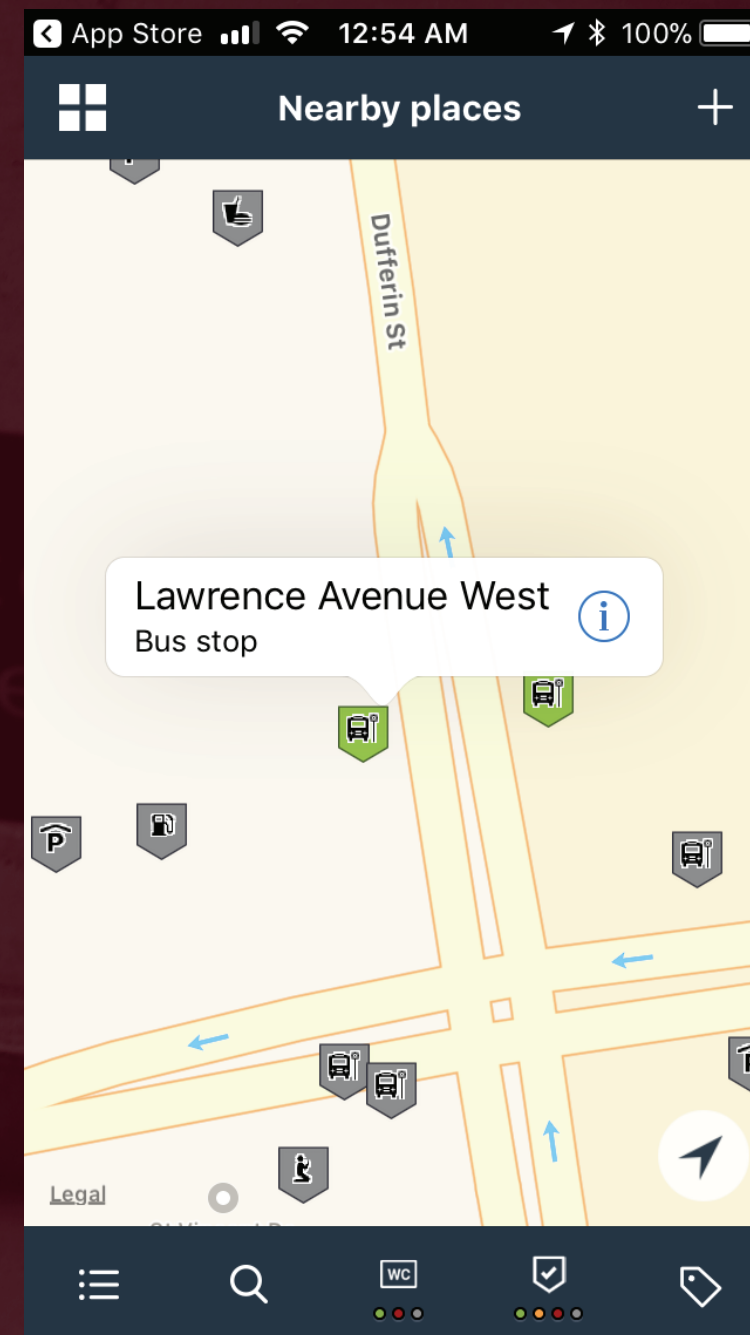
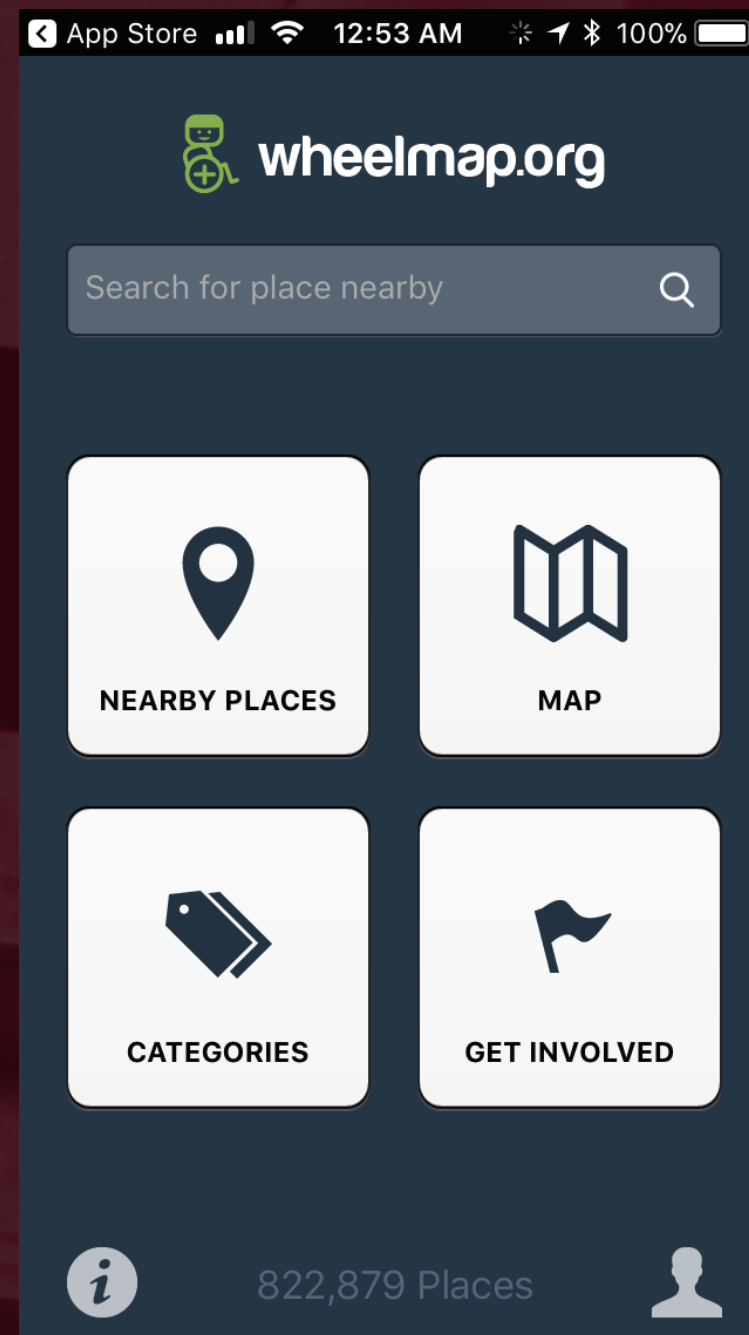
**The Foxes Den**  
North America > Food > Pub

**Wheelchair accessibility:**

- Wheelchair accessible ?
- Partially wheelchair accessible
- Not wheelchair accessible ?

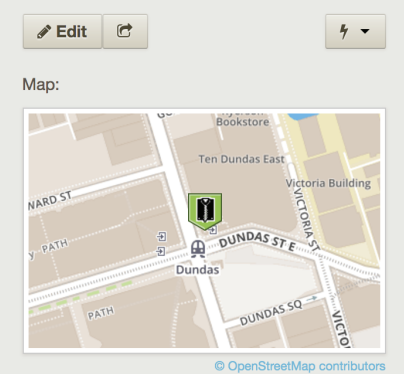
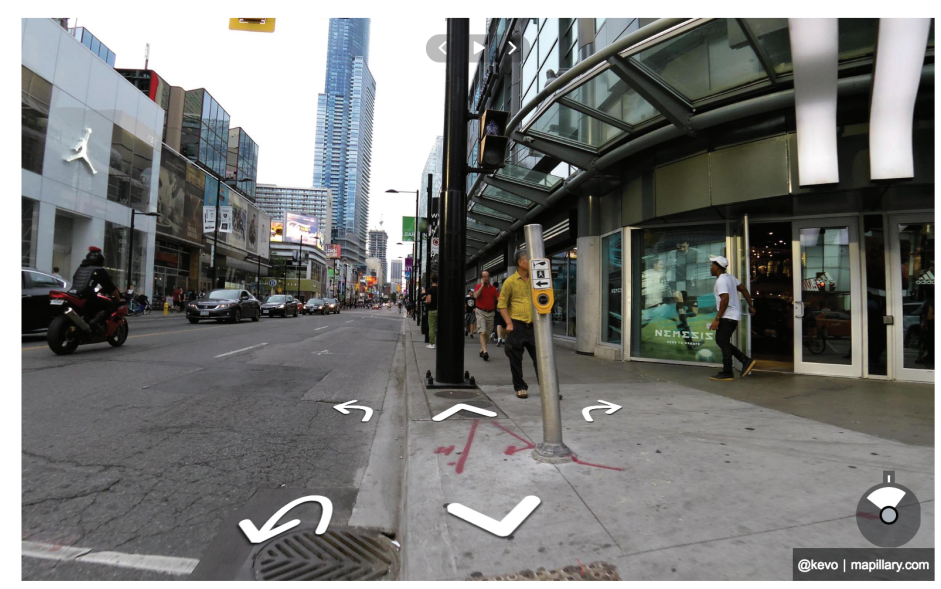
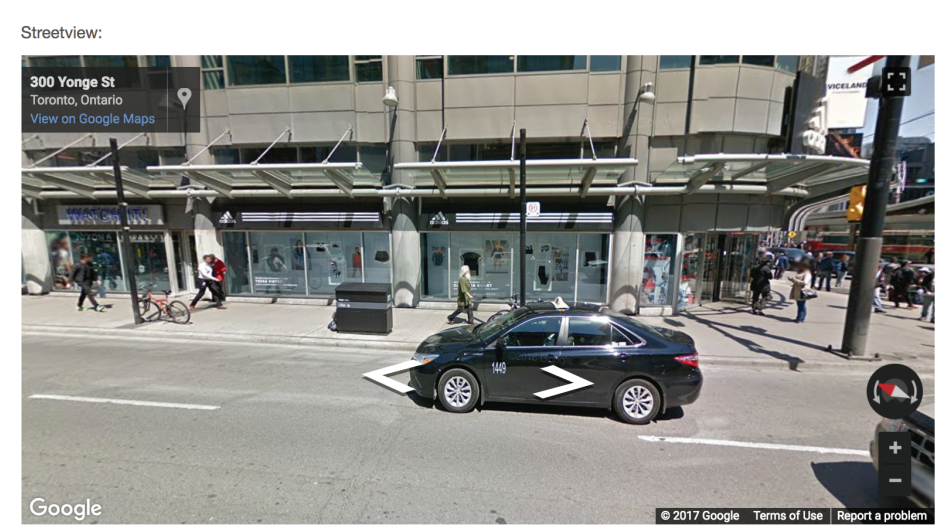
Help out by marking places!

Details [edit] [share] [power]



back Shopping > Clothes Adidas

Wheelchair accessibility:  
Wheelchair accessible Toilet status unknown



- Similar places: Clothes
- Winners 40m
  - H&M 81m
  - UNIQLO 122m
  - Old Navy 123m
  - RW&CO 132m
  - Ardene 138m


All places of type 'Clothes' in North America

- Places nearby:
- The Beer Store Express Alcohol Accessible with wheelchair 7yd
  - adidas Store Shopping Accessible with wheelchair 20yd
  - Chipotle Mexican Grill Restaurant Accessible with wheelchair 35yd
  - Starbucks Shopping Accessible with wheelchair 39yd
  - WATCH IT! Toronto Shopping Accessible with wheelchair 39yd
  - CIBC ATM ATM Accessible with wheelchair 42yd
  - Shark Club Sports Bar & Grill Night club Not accessible with wheelchair 42yd
  - Shoppers Drug Mart Shopping Accessible with wheelchair 42yd
  - The Pickle Barrel Restaurant Bar Accessible with wheelchair 47yd
  - FOREVER 21

# ACCESSIBILITY CLOUD

Wheelmap is one of several contributing organizations in the Accessibility Cloud, which is a cloud sharing application for people around the world to share global accessibility information with other users across all of their platforms. An American using AXSmap can fill out an accessibility Mapathon review of a business, and have a German user on Wheelmap access the same review in terms that they are used to.

# ACCESSIBILITY CLOUD

 Bank of Nova Scotia ×

Bank

Toronto, Ontario

[View this place on AXSMap Places](#) >

**Fully wheelchair accessible**

Entrance without steps, all rooms without steps.

**Accessible with**

- Wheelchair: Yes
- Guide dog: Yes

**Entrances**

- For wheelchair: ★★★★★5/5
- Is main entrance: No
- Spacious: ★★★★★5/5
- Is well lit: Yes
- Is quiet: Yes


**Restrooms**

- For wheelchair: ★★★★★5/5

[Share](#)

[Report an Issue](#)

Source: AXSMap Places —AXS-01

 BBVA Francés ×

Bank

Cerrito, Ciudad Autónoma de Buenos Aires

**Not wheelchair accessible**

Entrance has a step or several steps, rooms are not accessible.

[Details](#)

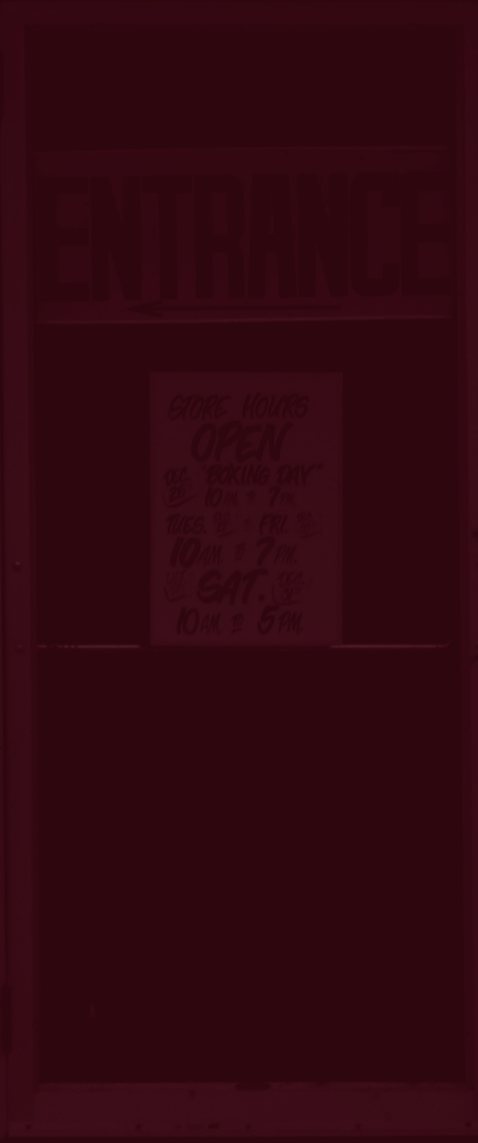
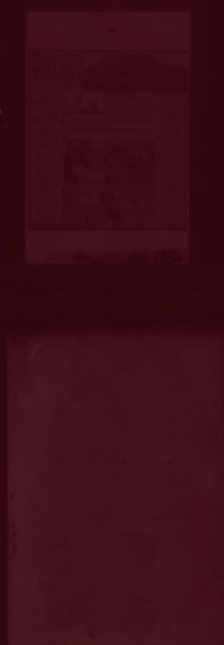
[Share](#)

[Report an Issue](#)

Using accessibility cloud, Wheelmap will soon have global review access on their site from all of their partners, including all of their additional information.

# CONCLUSION

Mapathons give us the chance to take willing participants, and show them just how many different aspects of access we interact with every day, and a chance to interact with them first hand.



**THANK YOU**

